



| NO. | DATE | REVISIONS |
|-----|------|-----------|
|     |      |           |
|     |      |           |
|     |      |           |
|     |      |           |
|     |      |           |



**GLADSTONE DESIGN, Inc.**  
 205 Main Street, P.O. Box 400  
 Gladstone, New Jersey 07034  
 Tel: (908) 426-1100  
 Fax: (908) 426-1101  
 www.gladstone-design.com

**RONALD A. KENNEDY, P.E.**  
 LICENSE NO. 24824-0000  
 PROJECT

**BEDMINSTER FARMS**  
 BLOCK 39  
 LOTS 12, 15 & 21  
 BEDMINSTER TOWNSHIP  
 SOMERSET COUNTY  
 NEW JERSEY

**PRELIMINARY AND FINAL MAJOR SUBDIVISION PLANS**  
**EXISTING CONDITIONS & ENVIRONMENTAL CONSTRAINTS PLAN**

DATE: JANUARY 15, 2020  
 SCALE: 1" = 100'  
 DRAWN: JAG  
 CHECKED: MDJ  
 SHEET NO.: 2 OF 14



**SLOPE LEGEND**

| SLOPE             | CATEGORY |
|-------------------|----------|
| 0.0% TO 14.9%     |          |
| 15.0% TO 24.9%    |          |
| 25.0% AND GREATER |          |

**SOIL SURVEY LEGEND**

| SOIL SYMBOL | SOIL NAME  | SOIL DESCRIPTION |
|-------------|--|------------------|
|             | BROOKBROOK SILT LOAM, 2% TO 6% SLOPES                      |                  |
|             | BOWMANVILLE SILT LOAM, 0% TO 2% SLOPES, FREQUENTLY FLOODED |                  |
|             | KUNESVILLE CHANNERY LOAM, 6% TO 12% SLOPES                 |                  |
|             | KUNESVILLE CHANNERY LOAM, 12% TO 18% SLOPES                |                  |
|             | KUNESVILLE CHANNERY LOAM, 18% TO 30% SLOPES                |                  |
|             | LANDSCAPING SILT LOAM, 2% TO 6% SLOPES                     |                  |
|             | NORTON LOAM, 2% TO 6% SLOPES                               |                  |
|             | NORTON LOAM, 6% TO 12% SLOPES                              |                  |
|             | NORTON LOAM, 6% TO 12% SLOPES, BROOD                       |                  |
|             | PENN SILT LOAM, 2% TO 6% SLOPES                            |                  |
|             | PENN SILT LOAM, 6% TO 12% SLOPES                           |                  |
|             | PENN CHANNERY SILT LOAM, 6% TO 12% SLOPES                  |                  |
|             | PARLIAM SILT LOAM, 0% TO 3% SLOPES, RARELY FLOODED         |                  |
|             | ROSELAND SILT LOAM, 2% TO 6% SLOPES                        |                  |
|             | ROSELAND SILT LOAM, 6% TO 2% SLOPES, FREQUENTLY FLOODED    |                  |

**GENERAL NOTES**

1. THIS MAP WAS PREPARED IN ACCORDANCE WITH THE FOLLOWING:
  - A. MAP ENTITLED "BOUNDARY SURVEY OF PROPERTY, PARCELS 12, 15, 16, 21 - BLOCK 39, LOT 21 - DETAILED, PREPARED BY JACKSON SURVEYING, SOMERSET COUNTY, NEW JERSEY, DATED APRIL 24, 2017.
  - B. SURVEY ENTITLED "SOIL SURVEY OF PROPERTY, PARCELS 12, 15, 16, 21 - BLOCK 39, LOT 21 - DETAILED, PREPARED BY JACKSON SURVEYING, SOMERSET COUNTY, NEW JERSEY, DATED APRIL 24, 2017.
  - C. AND LATEST RECORDS FILE 2017, PREPARED BY JACKSON SURVEYING, SOMERSET COUNTY, NEW JERSEY.



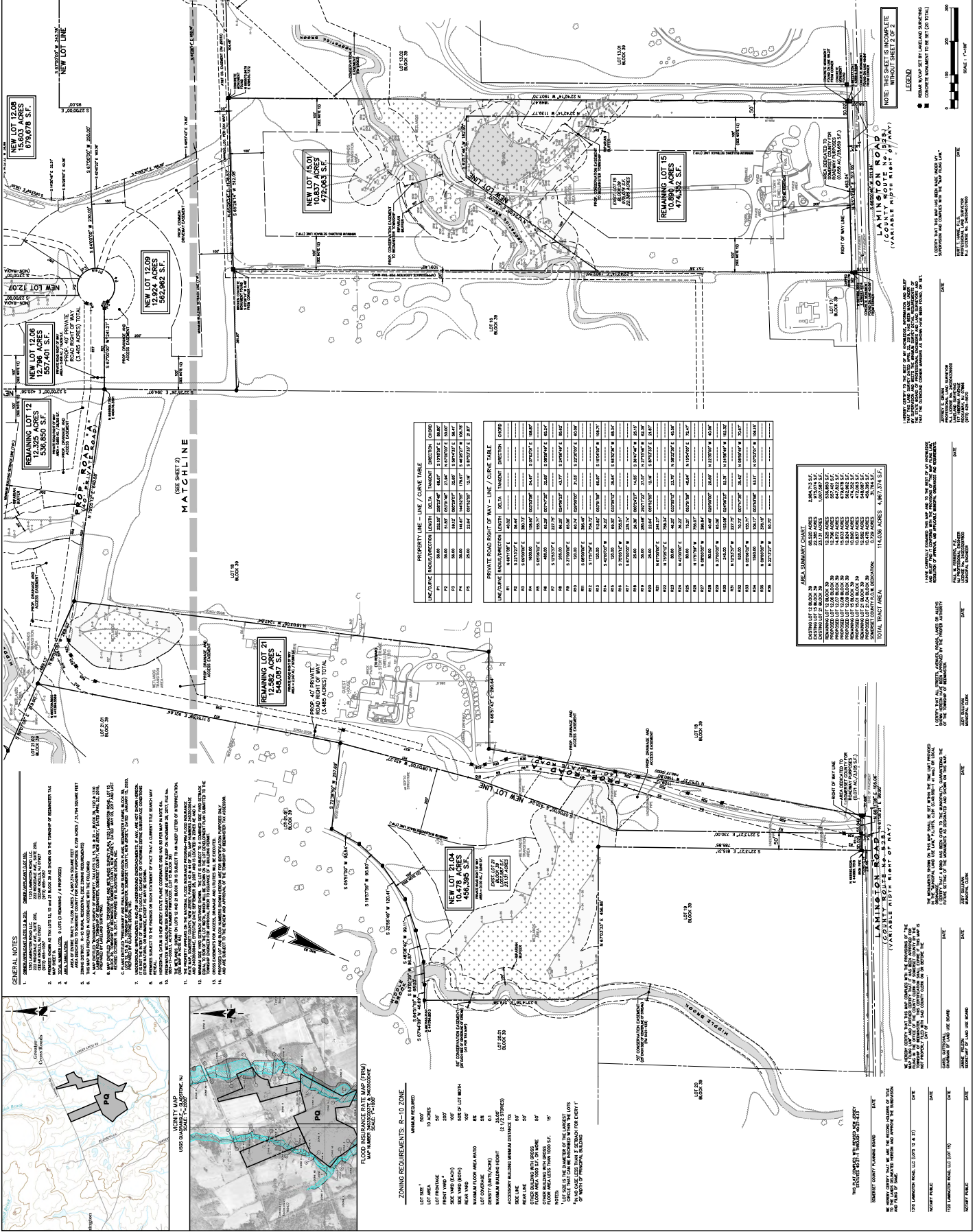


**KURT T. HANE, P.L.L.C.**  
 THE LANDSCAPE ARCHITECT  
 1000 W. MAIN STREET  
 SUITE 200  
 BEDMINSTER, NJ 07003  
 TEL: (908) 426-1100  
 FAX: (908) 426-1101

**BEDMINSTER FARMS**  
 BLOCK 39  
 LOTS 12, 15 & 21  
 BEDMINSTER TOWNSHIP  
 SOMERSET COUNTY  
 NEW JERSEY

**PRELIMINARY AND FINAL MAJOR SUBDIVISION PLANS**  
 FOR THE  
**MAJOR SUBDIVISION PLANS**  
 OF  
**LOT 12, 15 & 21**  
 OF  
**BLOCK 39**  
 OF  
**THE BEDMINSTER FARMS**  
 IN  
**BEDMINSTER TOWNSHIP**  
 OF  
**SOMERSET COUNTY**  
 NEW JERSEY

DATE: JANUARY 15, 2020  
 SCALE: 1" = 100'  
 SHEET NO.: 994-03  
 DRAWN: JAG  
 CHECKED: KTH  
 1 OF 2



**PROPERTY LINE - LINE / CURVE TABLE**

| LINE/CURVE | INTERSECTION | LENGTH | BEARING         | DIRECTION | CHAIN  |
|------------|--------------|--------|-----------------|-----------|--------|
| P1         | 0+00         | 225.00 | S 17° 15' 00" E | 1         | 225.00 |
| P2         | 0+225        | 100.00 | S 89° 59' 59" E | 1         | 100.00 |
| P3         | 0+325        | 100.00 | S 89° 59' 59" E | 1         | 100.00 |
| P4         | 0+425        | 100.00 | S 89° 59' 59" E | 1         | 100.00 |
| P5         | 0+525        | 100.00 | S 89° 59' 59" E | 1         | 100.00 |
| P6         | 0+625        | 100.00 | S 89° 59' 59" E | 1         | 100.00 |
| P7         | 0+725        | 100.00 | S 89° 59' 59" E | 1         | 100.00 |
| P8         | 0+825        | 100.00 | S 89° 59' 59" E | 1         | 100.00 |
| P9         | 0+925        | 100.00 | S 89° 59' 59" E | 1         | 100.00 |
| P10        | 1+025        | 100.00 | S 89° 59' 59" E | 1         | 100.00 |
| P11        | 1+125        | 100.00 | S 89° 59' 59" E | 1         | 100.00 |
| P12        | 1+225        | 100.00 | S 89° 59' 59" E | 1         | 100.00 |
| P13        | 1+325        | 100.00 | S 89° 59' 59" E | 1         | 100.00 |
| P14        | 1+425        | 100.00 | S 89° 59' 59" E | 1         | 100.00 |
| P15        | 1+525        | 100.00 | S 89° 59' 59" E | 1         | 100.00 |
| P16        | 1+625        | 100.00 | S 89° 59' 59" E | 1         | 100.00 |
| P17        | 1+725        | 100.00 | S 89° 59' 59" E | 1         | 100.00 |
| P18        | 1+825        | 100.00 | S 89° 59' 59" E | 1         | 100.00 |
| P19        | 1+925        | 100.00 | S 89° 59' 59" E | 1         | 100.00 |
| P20        | 2+025        | 100.00 | S 89° 59' 59" E | 1         | 100.00 |
| P21        | 2+125        | 100.00 | S 89° 59' 59" E | 1         | 100.00 |
| P22        | 2+225        | 100.00 | S 89° 59' 59" E | 1         | 100.00 |
| P23        | 2+325        | 100.00 | S 89° 59' 59" E | 1         | 100.00 |
| P24        | 2+425        | 100.00 | S 89° 59' 59" E | 1         | 100.00 |
| P25        | 2+525        | 100.00 | S 89° 59' 59" E | 1         | 100.00 |
| P26        | 2+625        | 100.00 | S 89° 59' 59" E | 1         | 100.00 |
| P27        | 2+725        | 100.00 | S 89° 59' 59" E | 1         | 100.00 |
| P28        | 2+825        | 100.00 | S 89° 59' 59" E | 1         | 100.00 |
| P29        | 2+925        | 100.00 | S 89° 59' 59" E | 1         | 100.00 |
| P30        | 3+025        | 100.00 | S 89° 59' 59" E | 1         | 100.00 |
| P31        | 3+125        | 100.00 | S 89° 59' 59" E | 1         | 100.00 |
| P32        | 3+225        | 100.00 | S 89° 59' 59" E | 1         | 100.00 |
| P33        | 3+325        | 100.00 | S 89° 59' 59" E | 1         | 100.00 |
| P34        | 3+425        | 100.00 | S 89° 59' 59" E | 1         | 100.00 |
| P35        | 3+525        | 100.00 | S 89° 59' 59" E | 1         | 100.00 |
| P36        | 3+625        | 100.00 | S 89° 59' 59" E | 1         | 100.00 |
| P37        | 3+725        | 100.00 | S 89° 59' 59" E | 1         | 100.00 |
| P38        | 3+825        | 100.00 | S 89° 59' 59" E | 1         | 100.00 |
| P39        | 3+925        | 100.00 | S 89° 59' 59" E | 1         | 100.00 |
| P40        | 4+025        | 100.00 | S 89° 59' 59" E | 1         | 100.00 |
| P41        | 4+125        | 100.00 | S 89° 59' 59" E | 1         | 100.00 |
| P42        | 4+225        | 100.00 | S 89° 59' 59" E | 1         | 100.00 |
| P43        | 4+325        | 100.00 | S 89° 59' 59" E | 1         | 100.00 |
| P44        | 4+425        | 100.00 | S 89° 59' 59" E | 1         | 100.00 |
| P45        | 4+525        | 100.00 | S 89° 59' 59" E | 1         | 100.00 |
| P46        | 4+625        | 100.00 | S 89° 59' 59" E | 1         | 100.00 |
| P47        | 4+725        | 100.00 | S 89° 59' 59" E | 1         | 100.00 |
| P48        | 4+825        | 100.00 | S 89° 59' 59" E | 1         | 100.00 |
| P49        | 4+925        | 100.00 | S 89° 59' 59" E | 1         | 100.00 |
| P50        | 5+025        | 100.00 | S 89° 59' 59" E | 1         | 100.00 |
| P51        | 5+125        | 100.00 | S 89° 59' 59" E | 1         | 100.00 |
| P52        | 5+225        | 100.00 | S 89° 59' 59" E | 1         | 100.00 |
| P53        | 5+325        | 100.00 | S 89° 59' 59" E | 1         | 100.00 |
| P54        | 5+425        | 100.00 | S 89° 59' 59" E | 1         | 100.00 |
| P55        | 5+525        | 100.00 | S 89° 59' 59" E | 1         | 100.00 |
| P56        | 5+625        | 100.00 | S 89° 59' 59" E | 1         | 100.00 |
| P57        | 5+725        | 100.00 | S 89° 59' 59" E | 1         | 100.00 |
| P58        | 5+825        | 100.00 | S 89° 59' 59" E | 1         | 100.00 |
| P59        | 5+925        | 100.00 | S 89° 59' 59" E | 1         | 100.00 |
| P60        | 6+025        | 100.00 | S 89° 59' 59" E | 1         | 100.00 |
| P61        | 6+125        | 100.00 | S 89° 59' 59" E | 1         | 100.00 |
| P62        | 6+225        | 100.00 | S 89° 59' 59" E | 1         | 100.00 |
| P63        | 6+325        | 100.00 | S 89° 59' 59" E | 1         | 100.00 |
| P64        | 6+425        | 100.00 | S 89° 59' 59" E | 1         | 100.00 |
| P65        | 6+525        | 100.00 | S 89° 59' 59" E | 1         | 100.00 |
| P66        | 6+625        | 100.00 | S 89° 59' 59" E | 1         | 100.00 |
| P67        | 6+725        | 100.00 | S 89° 59' 59" E | 1         | 100.00 |
| P68        | 6+825        | 100.00 | S 89° 59' 59" E | 1         | 100.00 |
| P69        | 6+925        | 100.00 | S 89° 59' 59" E | 1         | 100.00 |
| P70        | 7+025        | 100.00 | S 89° 59' 59" E | 1         | 100.00 |
| P71        | 7+125        | 100.00 | S 89° 59' 59" E | 1         | 100.00 |
| P72        | 7+225        | 100.00 | S 89° 59' 59" E | 1         | 100.00 |
| P73        | 7+325        | 100.00 | S 89° 59' 59" E | 1         | 100.00 |
| P74        | 7+425        | 100.00 | S 89° 59' 59" E | 1         | 100.00 |
| P75        | 7+525        | 100.00 | S 89° 59' 59" E | 1         | 100.00 |
| P76        | 7+625        | 100.00 | S 89° 59' 59" E | 1         | 100.00 |
| P77        | 7+725        | 100.00 | S 89° 59' 59" E | 1         | 100.00 |
| P78        | 7+825        | 100.00 | S 89° 59' 59" E | 1         | 100.00 |
| P79        | 7+925        | 100.00 | S 89° 59' 59" E | 1         | 100.00 |
| P80        | 8+025        | 100.00 | S 89° 59' 59" E | 1         | 100.00 |
| P81        | 8+125        | 100.00 | S 89° 59' 59" E | 1         | 100.00 |
| P82        | 8+225        | 100.00 | S 89° 59' 59" E | 1         | 100.00 |
| P83        | 8+325        | 100.00 | S 89° 59' 59" E | 1         | 100.00 |
| P84        | 8+425        | 100.00 | S 89° 59' 59" E | 1         | 100.00 |
| P85        | 8+525        | 100.00 | S 89° 59' 59" E | 1         | 100.00 |
| P86        | 8+625        | 100.00 | S 89° 59' 59" E | 1         | 100.00 |
| P87        | 8+725        | 100.00 | S 89° 59' 59" E | 1         | 100.00 |
| P88        | 8+825        | 100.00 | S 89° 59' 59" E | 1         | 100.00 |
| P89        | 8+925        | 100.00 | S 89° 59' 59" E | 1         | 100.00 |
| P90        | 9+025        | 100.00 | S 89° 59' 59" E | 1         | 100.00 |
| P91        | 9+125        | 100.00 | S 89° 59' 59" E | 1         | 100.00 |
| P92        | 9+225        | 100.00 | S 89° 59' 59" E | 1         | 100.00 |
| P93        | 9+325        | 100.00 | S 89° 59' 59" E | 1         | 100.00 |
| P94        | 9+425        | 100.00 | S 89° 59' 59" E | 1         | 100.00 |
| P95        | 9+525        | 100.00 | S 89° 59' 59" E | 1         | 100.00 |
| P96        | 9+625        | 100.00 | S 89° 59' 59" E | 1         | 100.00 |
| P97        | 9+725        | 100.00 | S 89° 59' 59" E | 1         | 100.00 |
| P98        | 9+825        | 100.00 | S 89° 59' 59" E | 1         | 100.00 |
| P99        | 9+925        | 100.00 | S 89° 59' 59" E | 1         | 100.00 |
| P100       | 10+025       | 100.00 | S 89° 59' 59" E | 1         | 100.00 |

**PRIVATE ROAD RIGHT OF WAY - LINE / CURVE TABLE**

| LINE/CURVE | INTERSECTION | LENGTH | BEARING         | DIRECTION | CHAIN  |
|------------|--------------|--------|-----------------|-----------|--------|
| P1         | 0+00         | 225.00 | S 17° 15' 00" E | 1         | 225.00 |
| P2         | 0+225        | 100.00 | S 89° 59' 59" E | 1         | 100.00 |
| P3         | 0+325        | 100.00 | S 89° 59' 59" E | 1         | 100.00 |
| P4         | 0+425        | 100.00 | S 89° 59' 59" E | 1         | 100.00 |
| P5         | 0+525        | 100.00 | S 89° 59' 59" E | 1         | 100.00 |
| P6         | 0+625        | 100.00 | S 89° 59' 59" E | 1         | 100.00 |
| P7         | 0+725        | 100.00 | S 89° 59' 59" E | 1         | 100.00 |
| P8         | 0+825        | 100.00 | S 89° 59' 59" E | 1         | 100.00 |
| P9         | 0+925        | 100.00 | S 89° 59' 59" E | 1         | 100.00 |
| P10        | 1+025        | 100.00 | S 89° 59' 59" E | 1         | 100.00 |
| P11        | 1+125        | 100.00 | S 89° 59' 59" E | 1         | 100.00 |
| P12        | 1+225        | 100.00 | S 89° 59' 59" E | 1         | 100.00 |
| P13        | 1+325        | 100.00 | S 89° 59' 59" E | 1         | 100.00 |
| P14        | 1+425        | 100.00 | S 89° 59' 59" E | 1         | 100.00 |
| P15        | 1+525        | 100.00 | S 89° 59' 59" E | 1         | 100.00 |
| P16        | 1+625        | 100.00 | S 89° 59' 59" E | 1         | 100.00 |
| P17        | 1+725        | 100.00 | S 89° 59' 59" E | 1         | 100.00 |
| P18        | 1+825        | 100.00 | S 89° 59' 59" E | 1         | 100.00 |
| P19        | 1+925        | 100.00 | S 89° 59' 59" E | 1         | 100.00 |
| P20        | 2+025        | 100.00 | S 89° 59' 59" E | 1         | 100.00 |
| P21        | 2+125        | 100.00 | S 89° 59' 59" E | 1         | 100.00 |
| P22        | 2+225        | 100.00 | S 89° 59' 59" E | 1         | 100.00 |
| P23        | 2+325        | 100.00 | S 89° 59' 59" E | 1         | 100.00 |
| P24        | 2+425        | 100.00 | S 89° 59' 59" E | 1         | 100.00 |
| P25        | 2+525        | 100.00 | S 89° 59' 59" E | 1         | 100.00 |
| P26        | 2+625        | 100.00 | S 89° 59' 59" E | 1         | 100.00 |
| P27        | 2+725        | 100.00 | S 89° 59' 59" E | 1         | 100.00 |
| P28        | 2+825        | 100.00 | S 89° 59' 59" E | 1         | 100.00 |
| P29        | 2+925        | 100.00 | S 89° 59' 59" E | 1         | 100.00 |
| P30        | 3+025        | 100.00 | S 89° 59' 59" E | 1         | 100.00 |
| P31        | 3+125        | 100.00 | S 89° 59' 59" E | 1         | 100.00 |
| P32        | 3+225        | 100.00 | S 89° 59' 59" E | 1         | 100.00 |
| P33        | 3+325        | 100.00 | S 89° 59' 59" E | 1         | 100.00 |
| P34        | 3+425        | 100.00 | S 89° 59' 59" E | 1         | 100.00 |
| P35        | 3+525        | 100.00 | S 89° 59' 59" E | 1         | 100.00 |
| P36        | 3+625        | 100.00 | S 89° 59' 59" E | 1         | 100.00 |
| P37        | 3+725        | 100.00 | S 89° 59' 59" E | 1         | 100.00 |
| P38        | 3+825        | 100.00 | S 89° 59' 59" E | 1         | 100.00 |
| P39        | 3+925        | 100.00 | S 89° 59' 59" E | 1         | 100.00 |
| P40        | 4+025        | 100.00 | S 89° 59' 59" E | 1         | 100.00 |
| P41        | 4+125        | 100.00 | S 89° 59' 59" E | 1         | 100.00 |
| P42        | 4+225        | 100.00 | S 89° 59' 59" E | 1         | 100.00 |
| P43        | 4+325        | 100.00 | S 89° 59' 59" E | 1         | 100.00 |
| P44        | 4+425        | 100.00 | S 89° 59' 59" E | 1         | 100.00 |
| P45        | 4+525        | 100.00 | S 89° 59' 59" E | 1         | 100.00 |
| P46        | 4+625        | 100.00 | S 89° 59' 59" E | 1         | 100.00 |
| P47        | 4+725        | 100.00 | S 89° 59' 59" E | 1         | 100.00 |
| P48        | 4+825        | 100.00 | S 89° 59' 59" E | 1         | 100.00 |
| P49        | 4+925        | 100.00 | S 89° 59' 59" E | 1         | 100.00 |
| P50        | 5+025        | 100.00 | S 89° 59' 59" E | 1         | 100.00 |
| P51        | 5+125        | 100.00 | S 89° 59' 59" E | 1         | 100.00 |
| P52        | 5+225        | 100.00 | S 89° 59' 59" E | 1         | 100.00 |
| P53        | 5+325        | 100.00 | S 89° 59' 59" E | 1         | 100.00 |
| P54        | 5+425        | 100.0  |                 |           |        |





| NO. | DATE | DESCRIPTION |
|-----|------|-------------|
|     |      |             |
|     |      |             |
|     |      |             |
|     |      |             |
|     |      |             |
|     |      |             |
|     |      |             |
|     |      |             |
|     |      |             |
|     |      |             |



**GLADSTONE  
DESIGN, Inc.**

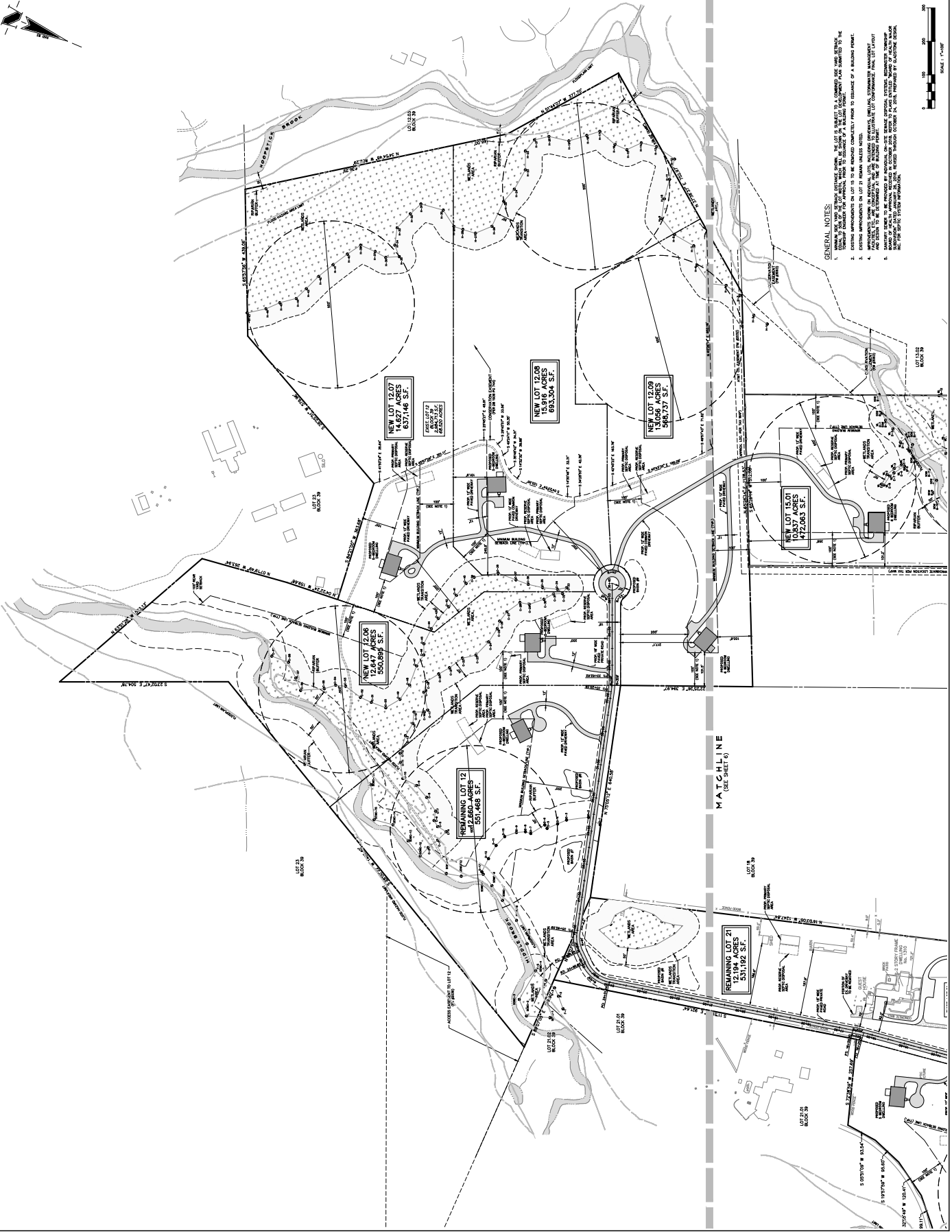
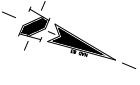
10000 W. 10th Street, Suite 100  
 Gladstone, Ohio 44024  
 P: (440) 798-3120  
 F: (440) 798-3120  
 www.gladstone-design.com

**RONALD A. KENNEDY, P.E.**  
 LICENSE NO. 14284-03-000000

**PROJECT**  
 BEDMINSTER  
 FARMS  
 BLOCK 39  
 LOTS 12, 15 & 21  
 BEDMINSTER TOWNSHIP  
 SOMERSET COUNTY  
 OHIO 44662

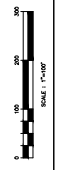
**SHEET TITLE**  
 PRIMARY AND FINAL  
 MAJOR SUBDIVISION PLANS  
 SITE DIMENSION PLAN  
 (PREFERRED LAYOUT)

|           |                  |
|-----------|------------------|
| DATE      | JANUARY 15, 2020 |
| SCALE     | 1" = 100'        |
| DRAWN     | JAG              |
| CHECKED   | MJD              |
| DATE      | 994-03           |
| SHEET NO. | 7 OF 14          |



**GENERAL NOTES:**

1. GENERAL AND DIMENSIONS SHOWN. THE LOT IS SUBJECT TO A COMMON USE EASE GRANT, THE TERMS OF WHICH ARE SET FORTH IN THE RECORDS OF THE COUNTY CLERK'S OFFICE.
2. EXISTING IMPROVEMENTS ON LOT IS TO BE REMOVED COMPLETELY PRIOR TO ISSUANCE OF A BUILDING PERMIT.
3. THE PROPOSED LAYOUT OF LOTS, INCLUDING THE LOCATION OF ALL UTILITIES, SHALL BE AS SHOWN ON THIS PLAN.
4. IMPROVEMENTS SHOWN ON INDIVIDUAL LOTS, INCLUDING EXISTING UTILITIES, SHALL BE THE RESPONSIBILITY OF THE OWNER OF EACH LOT.
5. ANY UTILITIES TO BE INSTALLED IN THE WETLANDS SHALL BE INSTALLED IN ACCORDANCE WITH THE REQUIREMENTS OF THE NATIONAL WETLANDS ACT AND THE FEDERAL REGULATIONS THEREUNDER.



| NO. | DATE | REVISIONS |
|-----|------|-----------|
|     |      |           |
|     |      |           |
|     |      |           |
|     |      |           |
|     |      |           |
|     |      |           |
|     |      |           |
|     |      |           |
|     |      |           |
|     |      |           |
|     |      |           |



**GLADSTONE  
DESIGN, Inc.**  
10000 W. 11th Street, Suite 100  
Tulsa, Oklahoma 74116  
Tel: (918) 438-1111  
Fax: (918) 438-1112

200 S. Main Street, P.O. Box 400  
Clarksburg, West Virginia 26301  
Tel: (304) 725-1111  
Fax: (304) 725-1112  
www.gladstoneinc.com

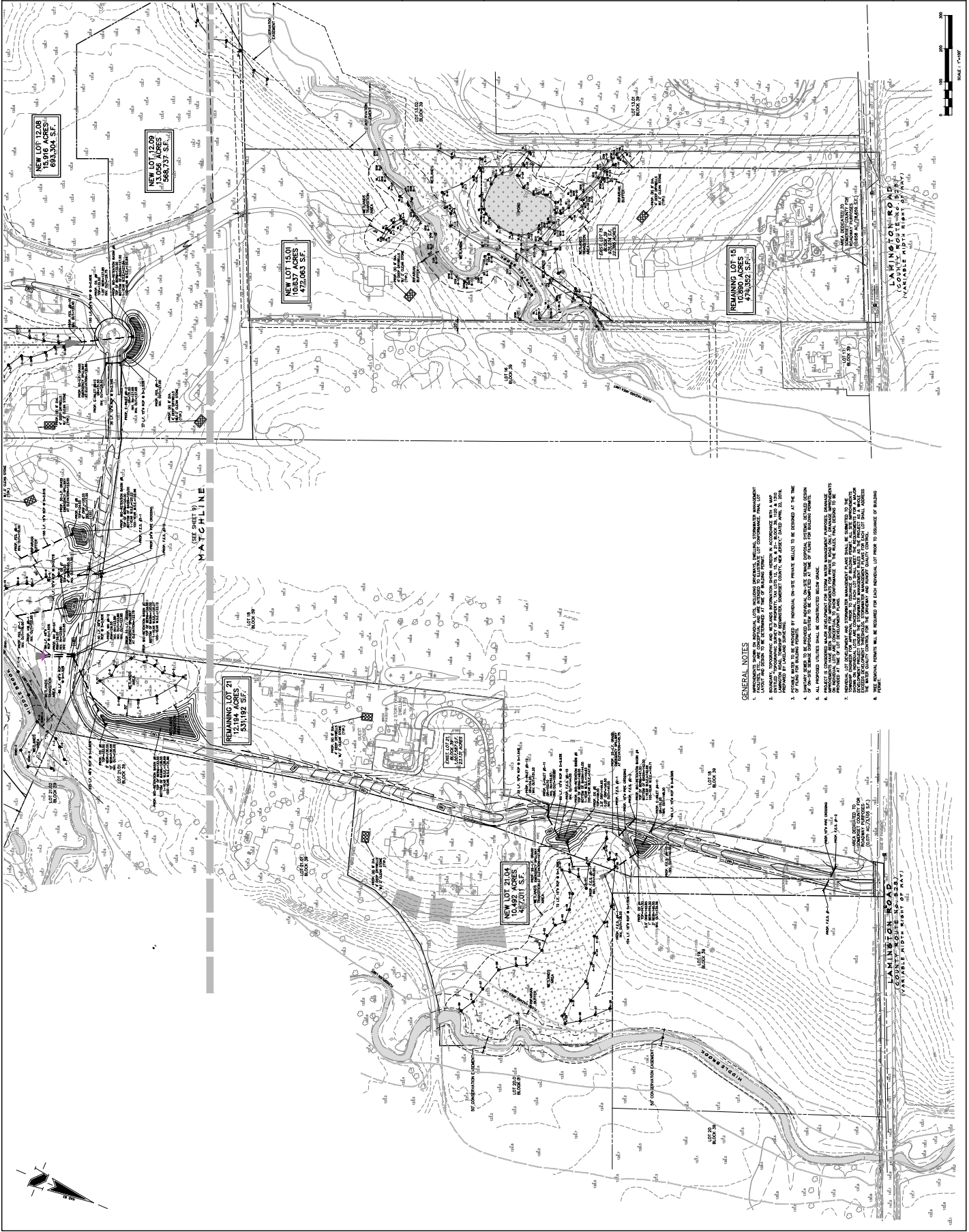
NO. 10000 W. 11th Street, Suite 100  
Tulsa, Oklahoma 74116  
Tel: (918) 438-1111  
Fax: (918) 438-1112

**RONALD A. KENNEDY, P.E.**  
LICENSE NO. 14563-0000

**PROJECT**  
BEMDMASTER  
FARMS  
BLOCK 39  
LOTS 12, 15 & 21  
BEMDMASTER TOWNSHIP  
SOMERSET COUNTY  
WEST VIRGINIA

**SHEET TITLE**  
PRELIMINARY AND FINAL  
MAJOR SUBDIVISION PLANS  
GRADING, DRAINAGE  
& UTILITY PLANS

**DATE** JANUARY 15, 2020  
**SCALE** 1" = 100'  
**DRAWN** JAG  
**CHECKED** JAG  
**DATE** 8 OF 14



- GENERAL NOTES**
1. IMPROVEMENTS SHOWN ON INDIVIDUAL LOTS, INCLUDING DRAINAGE, UTILITIES, CONSTRUCTION MANAGEMENT, AND LANDSCAPE DESIGN, ARE TO BE PROVIDED BY THE OWNER OF EACH INDIVIDUAL LOT.
  2. EXISTING UTILITIES SHOWN ON THIS PLAN ARE BASED ON RECORD DRAWINGS AND FIELD SURVEY. THE LOCATION AND DEPTH OF UTILITIES SHALL BE DETERMINED BY THE OWNER OF EACH INDIVIDUAL LOT.
  3. ALL UTILITIES SHALL BE DEEPENED TO A MINIMUM OF 48 INCHES BELOW FINISHED GRADE, UNLESS OTHERWISE SPECIFIED.
  4. ALL UTILITIES SHALL BE INSTALLED IN ACCORDANCE WITH THE LATEST EDITIONS OF THE WEST VIRGINIA PIPE, MANHOLE, AND STRUCTURE STANDARDS.
  5. ALL UTILITIES SHALL BE INSTALLED IN ACCORDANCE WITH THE LATEST EDITIONS OF THE WEST VIRGINIA DRAINAGE AND EROSION CONTROL STANDARDS.
  6. ALL UTILITIES SHALL BE INSTALLED IN ACCORDANCE WITH THE LATEST EDITIONS OF THE WEST VIRGINIA ROAD AND BRIDGE STANDARDS.
  7. THE OWNER SHALL BE RESPONSIBLE FOR OBTAINING ALL NECESSARY PERMITS FROM THE LOCAL GOVERNMENT AND STATE AGENCIES.
  8. THE OWNER SHALL BE RESPONSIBLE FOR OBTAINING ALL NECESSARY PERMITS FROM THE LOCAL GOVERNMENT AND STATE AGENCIES.













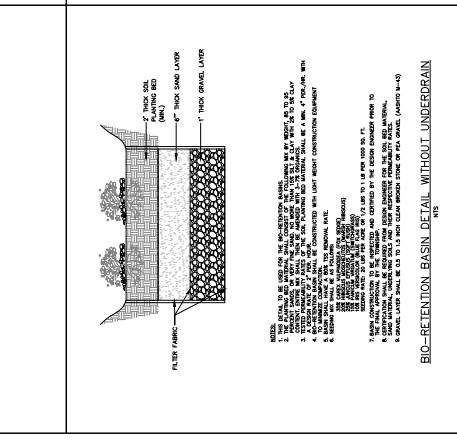
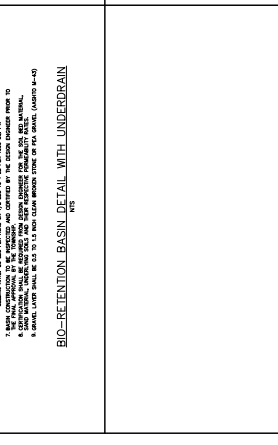
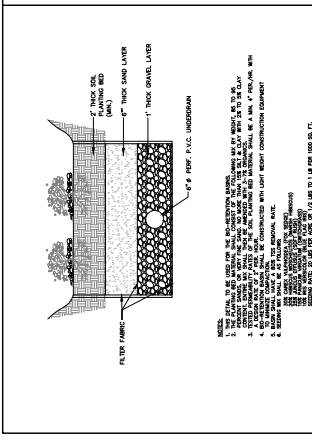
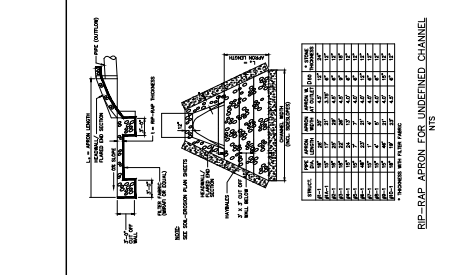
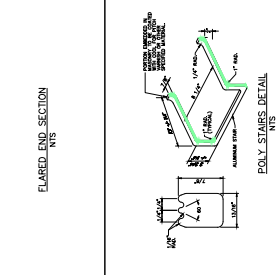
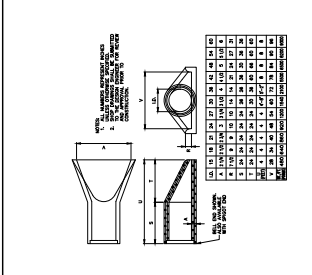
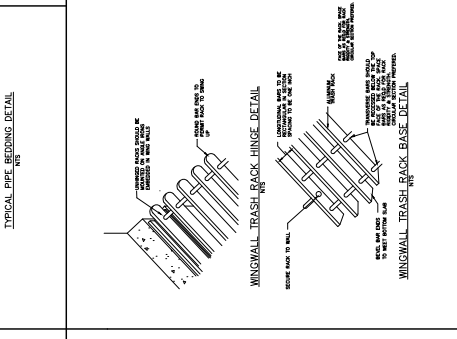
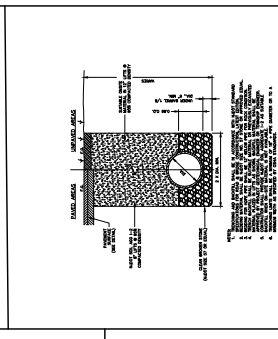
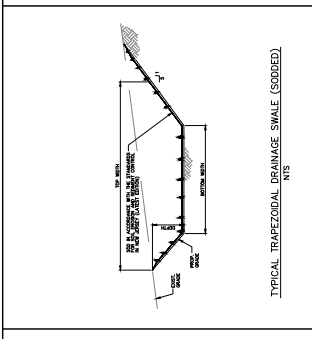
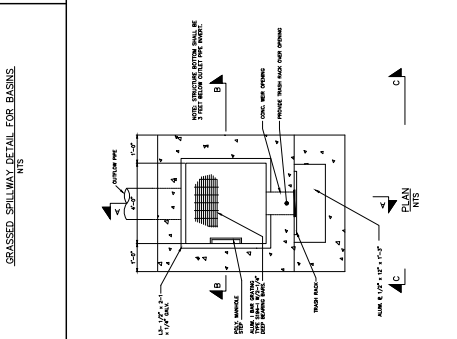
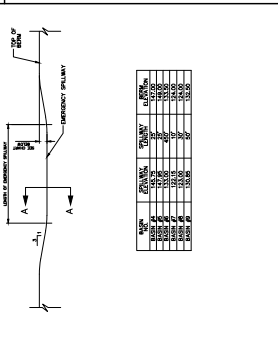
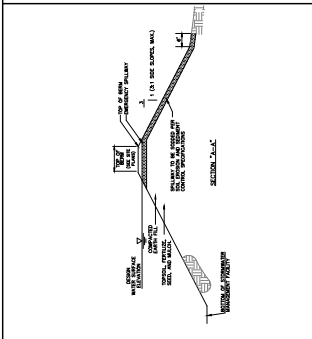
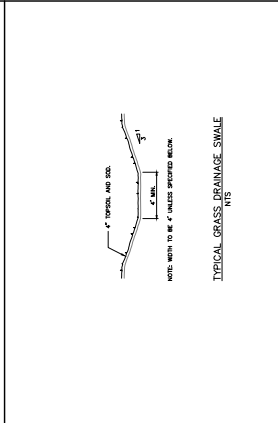
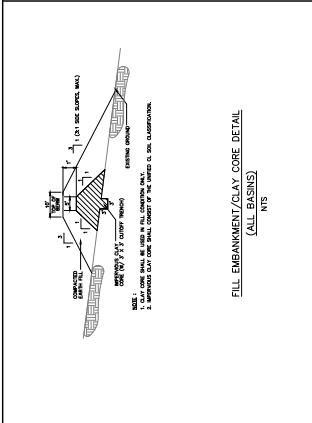
| NO. | DATE | DESCRIPTION |
|-----|------|-------------|
|     |      |             |
|     |      |             |
|     |      |             |
|     |      |             |
|     |      |             |
|     |      |             |
|     |      |             |
|     |      |             |
|     |      |             |
|     |      |             |

**GLADSTONE DESIGN, Inc.**  
 25 Main Street, P.O. Box 400  
 Gladstone, New Jersey 07034  
 Tel: (908) 794-3120  
 Fax: (908) 794-3120  
 No. of copies of submittal: \_\_\_\_\_  
 Date of submittal: \_\_\_\_\_  
 Project Name: \_\_\_\_\_  
 Project Location: \_\_\_\_\_  
 Project No.: \_\_\_\_\_

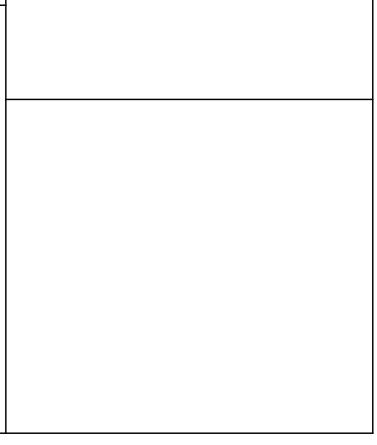
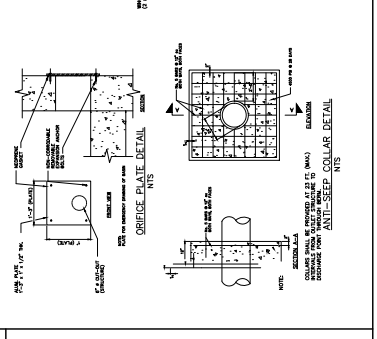
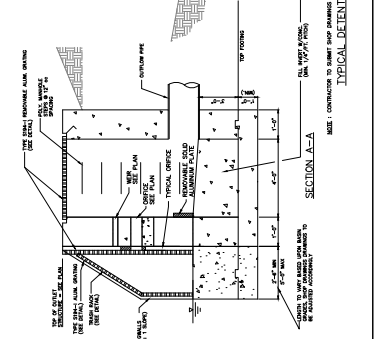
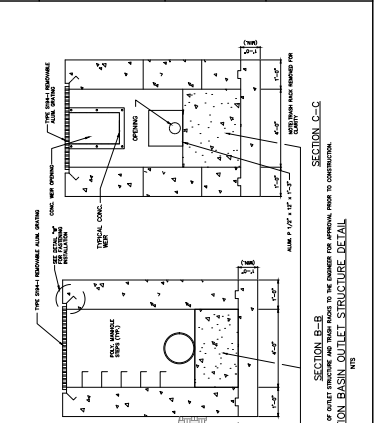
**ROYAL A. KENNEDY, P.E.**  
 LICENSE NO. 32848-03-00000000  
 PROJECT  
 BEDMINSTER FARMS  
 BLOCK 39  
 LOTS 12, 15 & 21  
 BEDMINSTER TOWNSHIP  
 SOMERSET COUNTY  
 NEW JERSEY

SHEET TITLE  
 PRELIMINARY AND FINAL MAJOR SUBMISSION PLANS CONSTRUCTION DETAILS

DATE: JANUARY 15, 2020  
 SCALE AS NOTED FOR NO. 894-03  
 DRAWN: JAG  
 CHECKED: MID  
 SHEET NO. 14 OF 14



| NO. | DATE | DESCRIPTION |
|-----|------|-------------|
|     |      |             |
|     |      |             |
|     |      |             |
|     |      |             |
|     |      |             |
|     |      |             |
|     |      |             |
|     |      |             |
|     |      |             |
|     |      |             |









| NO. | DATE | DESCRIPTION |
|-----|------|-------------|
|     |      |             |
|     |      |             |
|     |      |             |
|     |      |             |
|     |      |             |
|     |      |             |
|     |      |             |
|     |      |             |



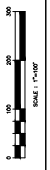
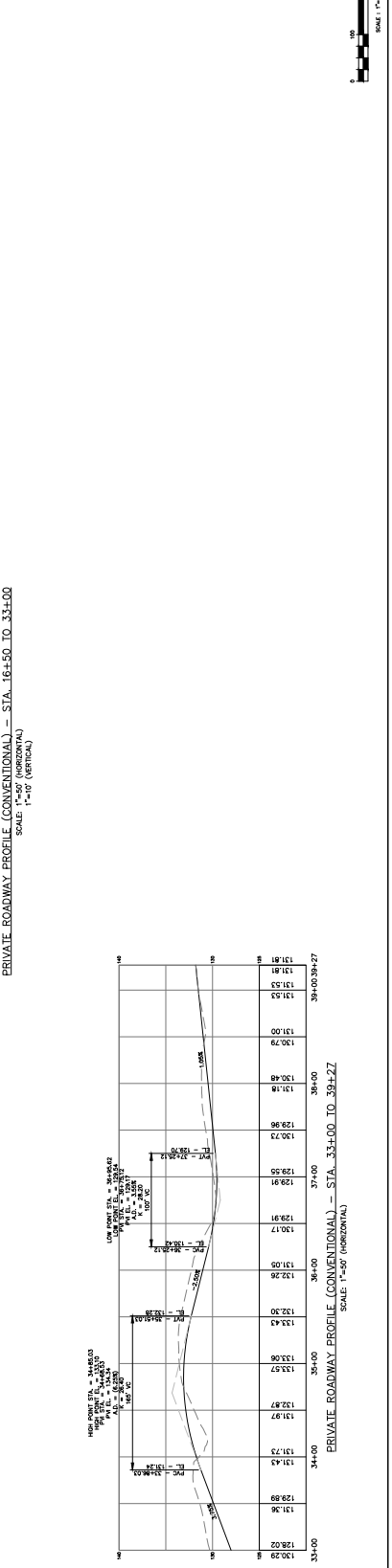
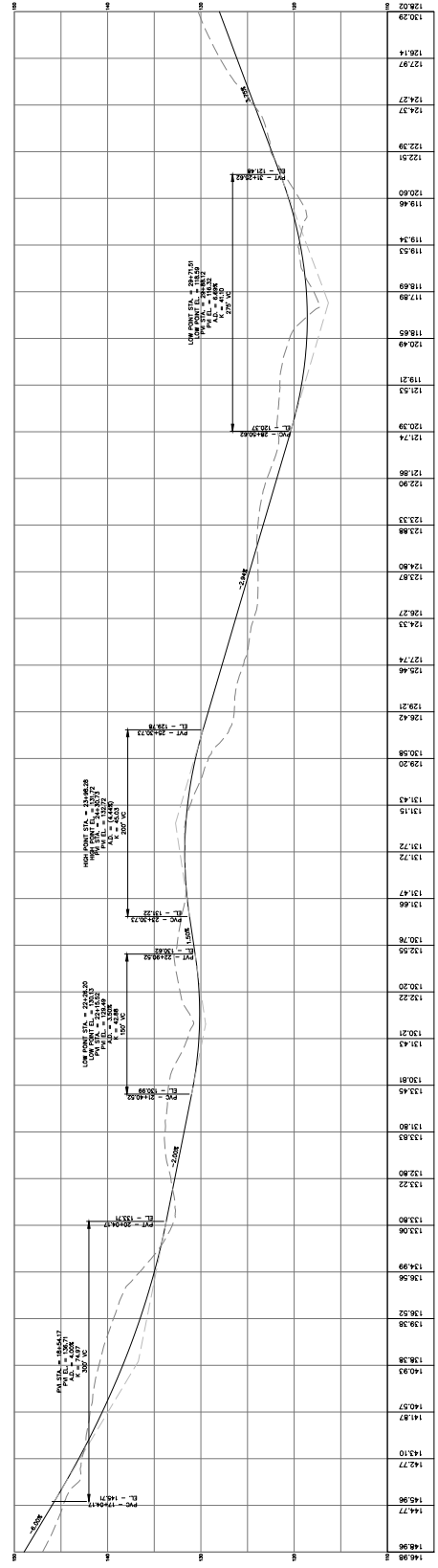
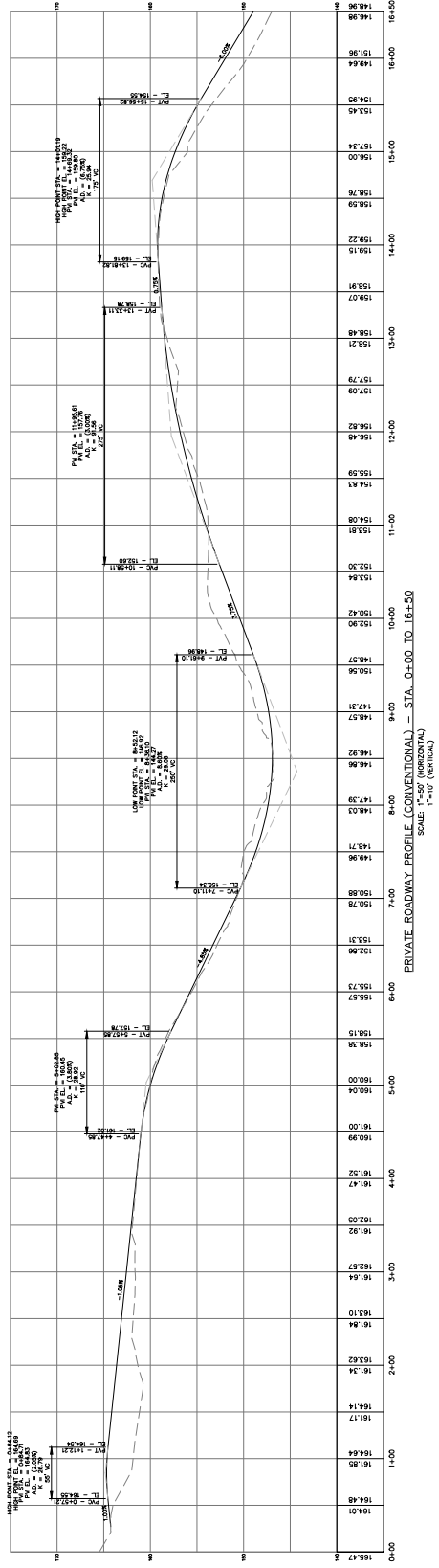
**GLADSTONE  
DESIGN, Inc.**  
CORPORATE HEADQUARTERS  
200 Main Street, P.O. Box 600  
Gladstone, New Jersey 07914  
Tel: (908) 438-5500  
Fax: (908) 438-5501  
www.gladstoneinc.com

NO. Certificate of Administration  
State of New Jersey  
Date of Issuance: 11/11/10  
Expiration Date: 11/11/13  
Professional Engineer  
Ronald A. Kennedy, P.E.  
No. 12-15-4-21

**PROJECT**  
BEDMINSTER  
FARMS  
BLOCK 39  
LOTS 12, 15 & 21  
BEDMINSTER TOWNSHIP  
SOMERSET COUNTY  
NJ 08851

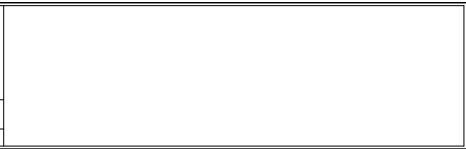
**DATE** JANUARY 15, 2020  
**SCALE** 1" = 100'  
**DRAWN** JAG  
**CHECKED** MJD  
**SHEET NO.** 3 OF 3

**SHEET TITLE**  
PRELIMINARY AND FINAL  
MAJOR SUBDIVISION PLANS  
DRIVEWAY PROFILES  
(CONVENTIONAL LAYOUT)



11/11/2010 10:45:10 AM C:\Users\jag\Documents\2010\2010-01-15-20\2010-01-15-20.dwg

| NO. | DATE | DESCRIPTION |
|-----|------|-------------|
|     |      |             |
|     |      |             |
|     |      |             |
|     |      |             |
|     |      |             |
|     |      |             |
|     |      |             |
|     |      |             |
|     |      |             |
|     |      |             |

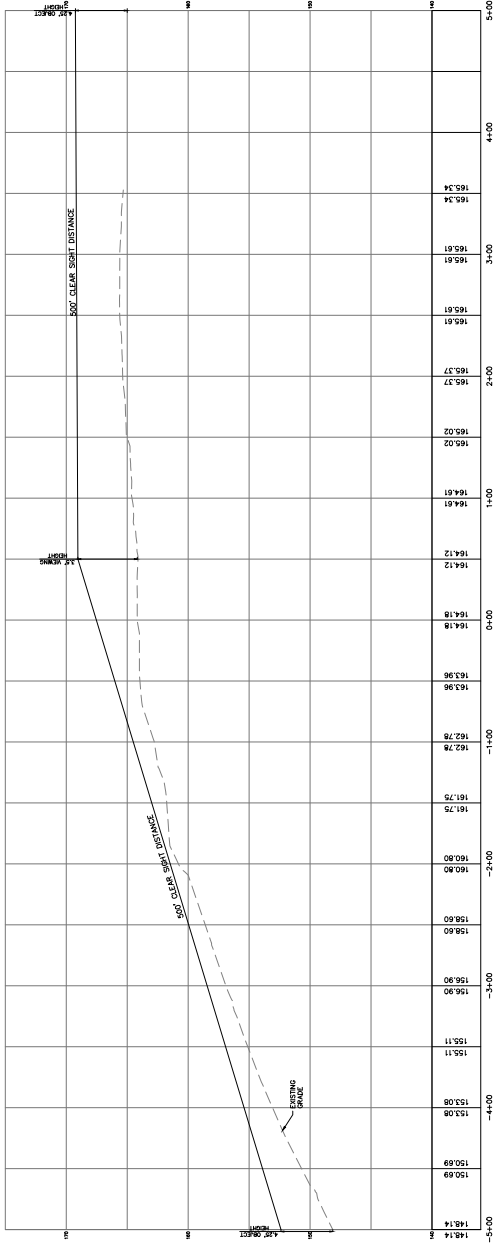


**GLADSTONE DESIGN, Inc.**  
 200 Main Street, P.O. Box 400  
 Gladstone, New Jersey 07914  
 P: (908) 769-3120  
 F: (908) 769-3120  
 www.gladstone-design.com

PROJECT  
**BEDMINSTER FARMS**  
 BLOCK 39  
 LOTS 12 & 21  
 BEDMINSTER TOWNSHIP  
 SOMERSET COUNTY  
 NEW JERSEY

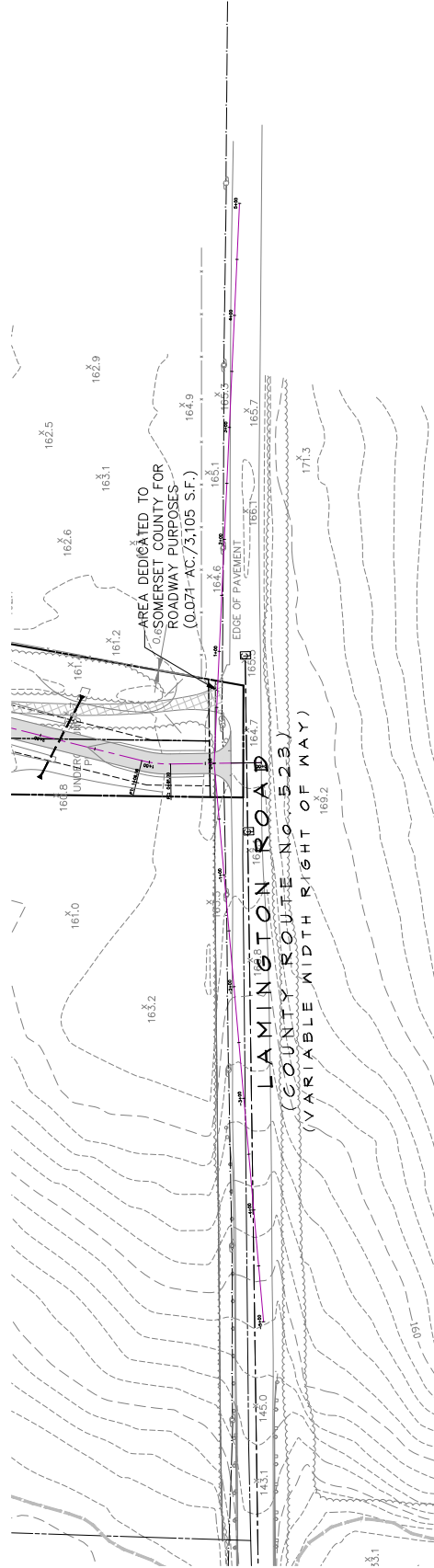
SHEET TITLE  
**PRELIMINARY AND FINAL MAJOR SUBDIVISION PLANS FOR COUNTY ROUTE 523 (LAMINGTON ROAD) - SITE PLAN & SIGHT DISTANCE PLAN & PROFILE**

DATE: JANUARY 15, 2020  
 DRAWN: JAG  
 CHECK: MDJ  
 SHEET NO.: 1 OF 2



CLEAR SIGHT LINE PROFILE

SCALE: 1"=40'



CLEAR SIGHT LINE PLAN

SCALE: 1"=40'

